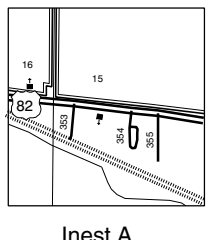


LEGEND

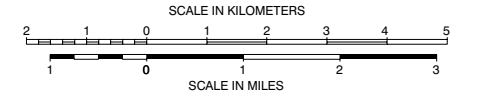
- ROADS AND ROADWAY FEATURES**
 - UNIMPROVED ROAD
 - GRAVEL
 - PAVED ROAD
 - UNPAVED HIGHWAY
 - DIVIDED HIGHWAY
 - INTERSTATE SYSTEM
 - CITY STREETS
- HIGHWAY BRIDGES**
 - BRIDGE 50 FEET AND OVER
 - DRAWBRIDGE
 - FERRY FRIEZE OR TOLL
 - HIGHWAY GRADE SEPARATION
 - HIGHWAY INTERCHANGE
- ROAD SYSTEM DESIGNATION**
 - INTERSTATE NUMBERED
 - U.S. NUMBERED
 - STATE NUMBERED
- RAILROADS**
 - RAILROAD STATION
 - RAILROAD ABOVE
 - RAILROAD BELOW
- AIRPORTS**
 - MILITARY AIRPORT
 - AIRPORT, LIMITED FACILITIES
 - LANDING AREA OR STRIP (INCLUDING PRIVATE AIR FIELDS)
 - AIRPORT, COMPLETE FACILITIES
 - AIRWAY LIGHT BEACON
- DRAINAGE AND NATURAL FEATURES**
 - NARROW STREAM
 - DRAINAGE ETCH
 - LAKES AND RESERVOIRS
 - OVERFLOW LAND
 - MARSH OR SWAMP LAND
- BOUNDARIES**
 - STATE BOUNDARY
 - COUNTY BOUNDARY
 - BEAT LINE
 - CONGRESSIONAL TOWNSHIP
 - SECTION LINE
 - NATIONAL OR STATE FOREST
 - RESERVATION, PARKS, ETC.
 - UNINCORPORATED PLACES
 - UNINCORPORATED DELINEATED AREAS
- NAVIGATION**
 - DOCK, PIER, OR LANDING
 - LEVEE OR DIKE
 - LEVEE OR DIKE WITH ROAD
- CITY AND VILLAGE CENTERS**
 - COUNTY SEAT
 - OTHER CITIES AND VILLAGES
- MISCELLANEOUS**
 - TRANSLUCIDATION STATION
 - BENCH MARK WITH ELEVATION
 - OBSERVATION OR LOOKOUT TOWER
 - POST OFFICE
 - POWER PLANT
 - WEIGHT STATION
 - HOSPITAL
 - COMMUNITY CENTER OR TOWNHALL
 - NATIONAL PARK GARAGE
 - SANITARY LAND FILL
 - CORRECTIONAL INSTITUTION
 - POLICE STATION
 - REST AREA
- CONSERVATION AND RECREATION**
 - MOTEL OR HOTEL
 - CAMP OR LODGE
 - HISTORIC OR SCENIC SITE
 - FAIR GROUNDS OR RACE COURSE
 - SMALL PARK
 - GOLF COURSE OR COUNTRY CLUB
- INDUSTRIAL**
 - FACTORY OR INDUSTRY
 - SEASONAL INDUSTRY
- CHURCHES AND CEMETERIES**
 - CHURCH
 - CEMETERY
 - CHURCH WITH CEMETERY ADJACENT
- EDUCATION**
 - SCHOOL
- MISCELLANEOUS STRUCTURES**
 - ARMORY
 - FORT, ARMY CAMP



GENERAL HIGHWAY MAP
CARROLL COUNTY
 MISSISSIPPI
 © 2005

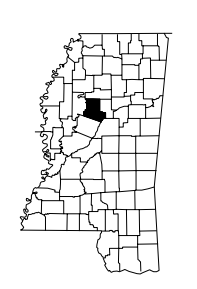
MISSISSIPPI DEPARTMENT OF TRANSPORTATION
 PLANNING DIVISION
 IN COOPERATION WITH THE
 U.S. DEPARTMENT OF TRANSPORTATION
 FEDERAL HIGHWAY ADMINISTRATION
 TRANSVERSE MERCATOR PROJECTION,
 STATE PLANE COORDINATE SYSTEM 1983

DATA SOURCES	
1996 ASCS AERIAL PHOTOS	
1987 USGS DLG	
2001 MDOT FIELD INVENTORY	
2000 POPULATION 10,769	
2003 BEAT LINES	



CARROLL COUNTY ROAD INDEX	
1 01	101 01
1 02	101 02
1 03	101 03
1 04	101 04
1 05	101 05
1 06	101 06
1 07	101 07
1 08	101 08
1 09	101 09
1 10	101 10
1 11	101 11
1 12	101 12
1 13	101 13
1 14	101 14
1 15	101 15
1 16	101 16
1 17	101 17
1 18	101 18
1 19	101 19
1 20	101 20
1 21	101 21
1 22	101 22
1 23	101 23
1 24	101 24
1 25	101 25
1 26	101 26
1 27	101 27
1 28	101 28
1 29	101 29
1 30	101 30
1 31	101 31
1 32	101 32
1 33	101 33
1 34	101 34
1 35	101 35
1 36	101 36
1 37	101 37
1 38	101 38
1 39	101 39
1 40	101 40
1 41	101 41
1 42	101 42
1 43	101 43
1 44	101 44
1 45	101 45
1 46	101 46
1 47	101 47
1 48	101 48
1 49	101 49
1 50	101 50
1 51	101 51
1 52	101 52
1 53	101 53
1 54	101 54
1 55	101 55
1 56	101 56
1 57	101 57
1 58	101 58
1 59	101 59
1 60	101 60
1 61	101 61
1 62	101 62
1 63	101 63
1 64	101 64
1 65	101 65
1 66	101 66
1 67	101 67
1 68	101 68
1 69	101 69
1 70	101 70
1 71	101 71
1 72	101 72
1 73	101 73
1 74	101 74
1 75	101 75
1 76	101 76
1 77	101 77
1 78	101 78
1 79	101 79
1 80	101 80
1 81	101 81
1 82	101 82
1 83	101 83
1 84	101 84
1 85	101 85
1 86	101 86
1 87	101 87
1 88	101 88
1 89	101 89
1 90	101 90
1 91	101 91
1 92	101 92
1 93	101 93
1 94	101 94
1 95	101 95
1 96	101 96
1 97	101 97
1 98	101 98
1 99	101 99
1 00	101 00

MISSISSIPPI DEPARTMENT OF TRANSPORTATION
 COPYRIGHT LICENSE AGREEMENT
 With the purchase of this map, the Mississippi Department of Transportation grants you the right to use the copyrighted map as set forth below.
 The map is owned by the Mississippi Department of Transportation and is protected by the United States copyright laws and international provisions. You are granted to use the map for any other copyright material except that you may copy the map in whole or in part, without modification, provided the notice of copyright by the Mississippi Department of Transportation is displayed in a prominent location on each copy.
 You have a royalty-free right to reproduce and distribute the copyrighted map in whole or in part, without modification, provided the Mississippi Department of Transportation copyright notice is displayed in a prominent location on each reproduction. Any modification of a map copy, this agreement, and notice your notice to use, copy, and distribute the map. Use of modified maps is strictly prohibited and is subject to prosecution under State and Federal laws.
 This agreement is governed by the laws of the State of Mississippi, U.S. Federal Law, and U.S. International Treaties.
 Should you have any questions concerning this agreement, please write: Mississippi Department of Transportation, Planning Division, Post Office Box 100, Jackson, Mississippi 39202-1000.



GENERAL HIGHWAY MAP
 CARROLL COUNTY
 MISSISSIPPI

GENERAL HIGHWAY MAP
 CARROLL COUNTY
 MISSISSIPPI